

THIS DRAWING IS UNPUBLISHED. QUELLE RECHTSRESERVATIONEN ZUR VERWIRTLICHUNG DER RECHTE AN DEN ERFINDER UND AN DEN PATENTBEHÖRDEN. RECHTSRESERVATIONEN FÜR PATENTE, DIE SICH BEZÜGLICH DIESER ZEICHNUNG BEZIEHEN. RECHTSRESERVATIONEN FÜR PATENTE, DIE SICH BEZÜGLICH DIESER ZEICHNUNG BEZIEHEN. RECHTSRESERVATIONEN FÜR PATENTE, DIE SICH BEZÜGLICH DIESER ZEICHNUNG BEZIEHEN.

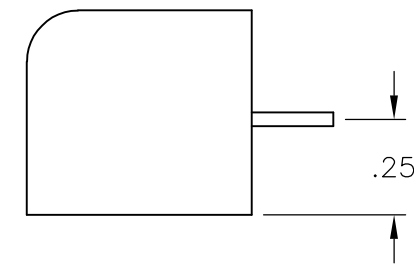
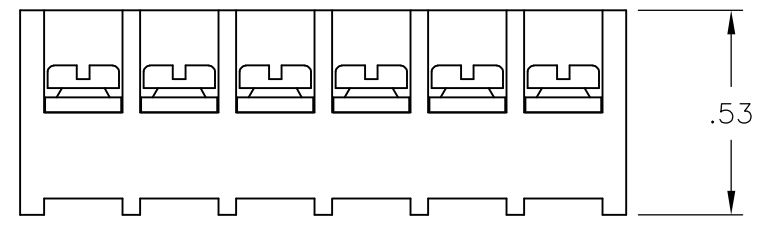
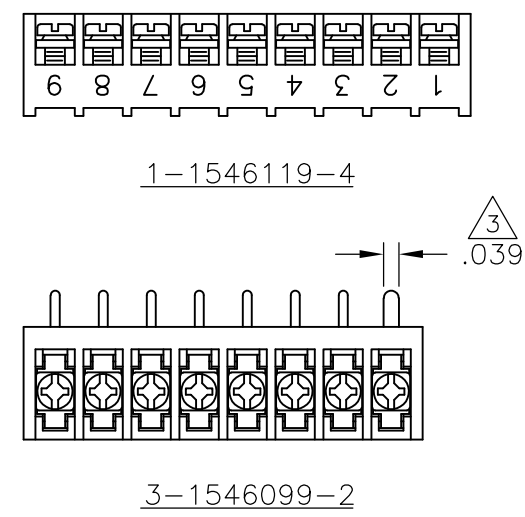
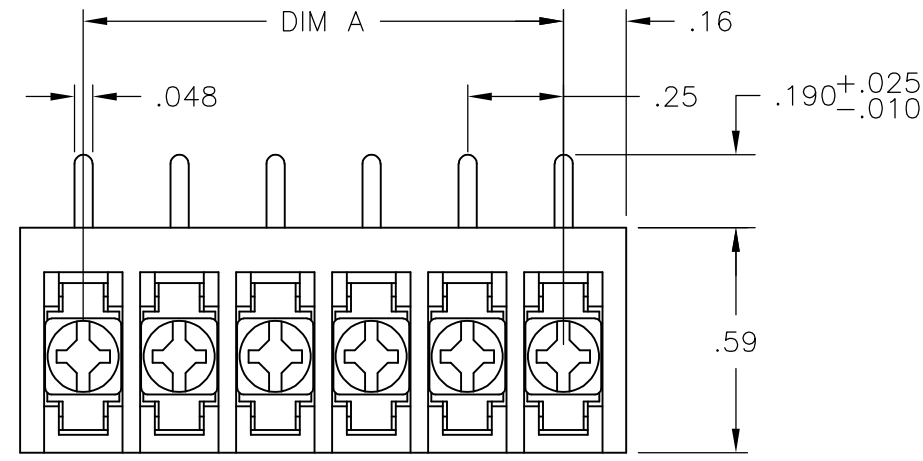
© COPYRIGHT - By -

LOC	DIST	REVISIONS			
FT	0	P	LTR REV	DESCRIPTION	DATE
			F	REVISED PER ECO-11-023401	01DEC11
					DWN
					APVD
					MS

MATERIAL:
HOUSING: THERMOPLASTIC, UL94V-0, BLACK.
TERMINAL: BRIGHT TIN PLATED, COPPER ALLOY.
M3 SCREWS: ZINC PLATED STEEL.
ELECTRICAL:
RATED CURRENT: 10A.
OPERATING VOLTAGE: 300V.
WIRE RANGE: 16-30 AWG.

MECHANICAL:
PITCH (TERMINAL SPACING): .250"
OPERATING TEMP.: 120°C MAX.

- 1 SEE FIGURE.
- 2 M3 SCREWS BOTTOMED.
- 3 RECOMMENDED PCB HOLE DIAMETER: .090".
- 4 PRELIMINARY PART NUMBER.
- 5 OBSOLETE PARTS: OBSOLETE CIS STREAMLINING PER D.RENAUD/D.SINISI

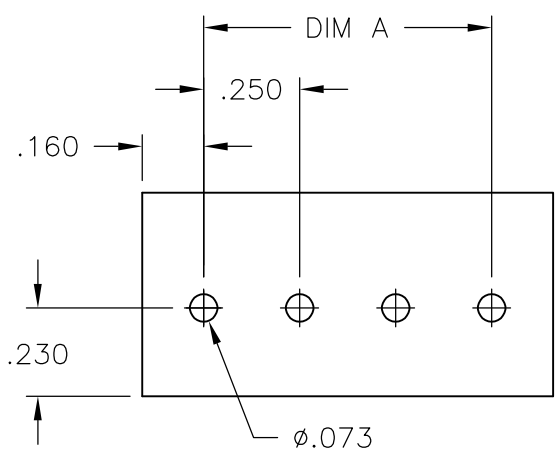


5 1 OBSOLETE

4 1

5 2 OBSOLETE

DIM "A"	NO OF POS	CATALOG NUMBER	TE PART NO.
7.25	30	3PCR-30-006	3-1546099-0
7.00	29	3PCR-29-006	2-1546099-9
6.75	28	3PCR-28-006	2-1546099-8
6.50	27	3PCR-27-006	2-1546099-7
6.25	26	3PCR-26-006	2-1546099-6
6.00	25	3PCR-25-006	2-1546099-5
5.75	24	3PCR-24-006	2-1546099-4
5.50	23	3PCR-23-006	2-1546099-3
5.25	22	3PCR-22-006	2-1546099-2
5.00	21	3PCR-21-006	2-1546099-1
4.75	20	3PCR-20-006	2-1546119-0
4.50	19	3PCR-19-006	1-1546119-9
4.25	18	3PCR-18-006	1-1546099-8
4.00	17	3PCR-17-006	1-1546099-7
3.75	16	3PCR-16-006	1-1546099-6
3.50	15	3PCR-15-006	1-1546099-5
3.25	14	3PCR-14-006	1-1546099-4
3.00	13	3PCR-13-006	1-1546099-3
2.75	12	3PCR-12-006	1-1546119-7
2.50	11	3PCR-11-006	1-1546119-6
2.25	10	3PCR-10-006	1-1546119-5
2.00	9	3PCR-09-256	1-1546119-4
2.00	9	3PCR-09-006	1-1546119-3
1.75	8	3PCR-08-310	3-1546099-2
1.75	8	3PCR-08-006	1-1546119-2
1.50	7	3PCR-07-006	1-1546119-0
1.25	6	3PCR-06-302	3-1546099-1
1.25	6	3PCR-06-006	1-1437646-2
1.00	5	3PCR-05-006	1437646-9
.75	4	3PCR-04-006	1546119-8
.50	3	3PCR-03-006	1546099-1
.25	2	3PCR-02-006	1546119-5



RECOMMENDED PCB LAYOUT

THIS DRAWING IS A CONTROLLED DOCUMENT.		DWN/DESIGNED	S. SCHLEGEL		4/22/03
CHECKED		CHK/CONTROLLED	S. YODER		6/18/02
APPROVED		APVD/APPROVED	S. YODER		6/18/02
DIMENSIONS: MILLIMETERS AND INCHES		TOLERANCES UNLESS OTHERWISE SPECIFIED:		NAME: D. RENAUD	
0 PLC/DEC: ± -		1 PLC/DEC: ± -		PRODUCT SPEC: 3PCR-XX-006 ASSEMBLY	
2 PLC/DEC: ± .02		3 PLC/DEC: ± .010		APPLICATION SPEC: -	
4 PLC/DEC: ± -		ANGLES: ANGLES ± -		SIZE: A3	
MATERIAL: -		FINISH/OBERFLÄCHE/FARBE: -		CAGE CODE: 00779	
WEIGHT: -		REVISION: -		DRAWING NO: G-1437646-9	
CUSTOMER DRAWING: -		SCALE: -		RESTRICTED TO: -	
SHEET: 1 OF 1		REV: F		DESIGNED BY: D. RENAUD	